



# CARTER CT26

## Crawler Excavator



*Extremely Reliable Crawler Excavator, Perfect for  
New Zealand's Tough Conditions*





*Carter Are Quality Excavators Using The Best Components*

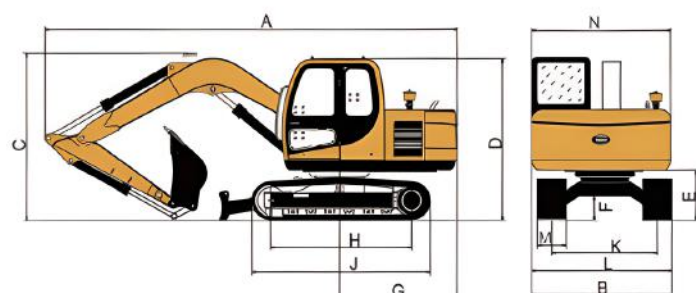
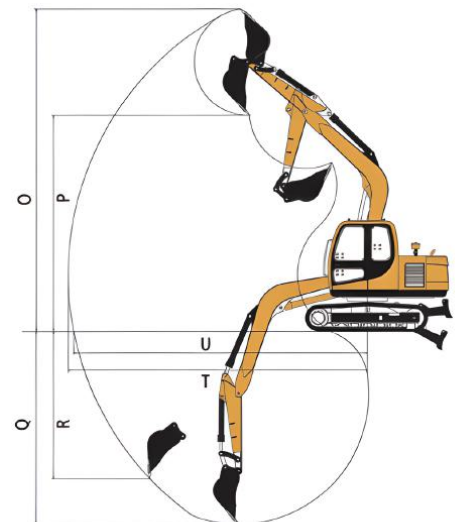
# CARTER CT26 Crawler Excavator



| Specifications              | CT26                |
|-----------------------------|---------------------|
| Operating Weight            | 2.78 Tonne          |
| Bucket Capacity             | 0.08 m <sup>3</sup> |
| Engine Model                | YANMAR 3TNV80F      |
| Rated Power                 | 15.2/2500 kw/r/min  |
| Max. Flow                   | 72 L/min            |
| Working Pressure            | 22 Mpa              |
| Fuel Tank Capacity          | 35 Litres           |
| Hydraulic Oil Tank Capacity | 28 Litres           |
| Travel Speed                | 2.0/3.2 km/h        |
| Swing Speed                 | 11.5 r/min          |
| Max. Climbing Degree        | 58%                 |
| Arm Digging Force           | 14.2 KN             |
| Bucket Digging Force        | 20 KN               |
| Average Grounding Pressure  | 30.5 Kpa            |

| Overall Dimension                   | CT26    |
|-------------------------------------|---------|
| A - Overall Length                  | 4159 mm |
| B - Overall Width                   | 1550 mm |
| C - Overall Height (to top of boom) | 1636 mm |
| D - Overall Height (to top of cab)  | 2560 mm |
| E - Counterweight Ground Clearance  | 535 mm  |
| F - Min. Ground Clearance           | 320 mm  |
| G - Tail Swing Radius               | 775 mm  |
| H - Track Ground Length             | 1600 mm |
| J - Track Length                    | 2040 mm |
| K - Track Gauge                     | 1250 mm |
| L - Track Width                     | 1550 mm |
| M - Track Shoe Width                | 250 mm  |

| Working Range                          | CT26    |
|--|---------|
| O - Max. Digging Height                | 4132 mm |
| P - Max. Dumping Height                | 2742 mm |
| Q - Max. Digging Depth                 | 2485 mm |
| R - Max. Vertical Wall Digging Depth   | 2240 mm |
| T - Max. Digging Reach                 | 4610mm  |
| U - Max. Digging Reach at Ground Level | 4494 mm |



6A Sloper Avenue  
Frankton, Hamilton 3204

hamiltondiggers@gmail.com  
www.carterexcavators.co.nz

021 1154 722



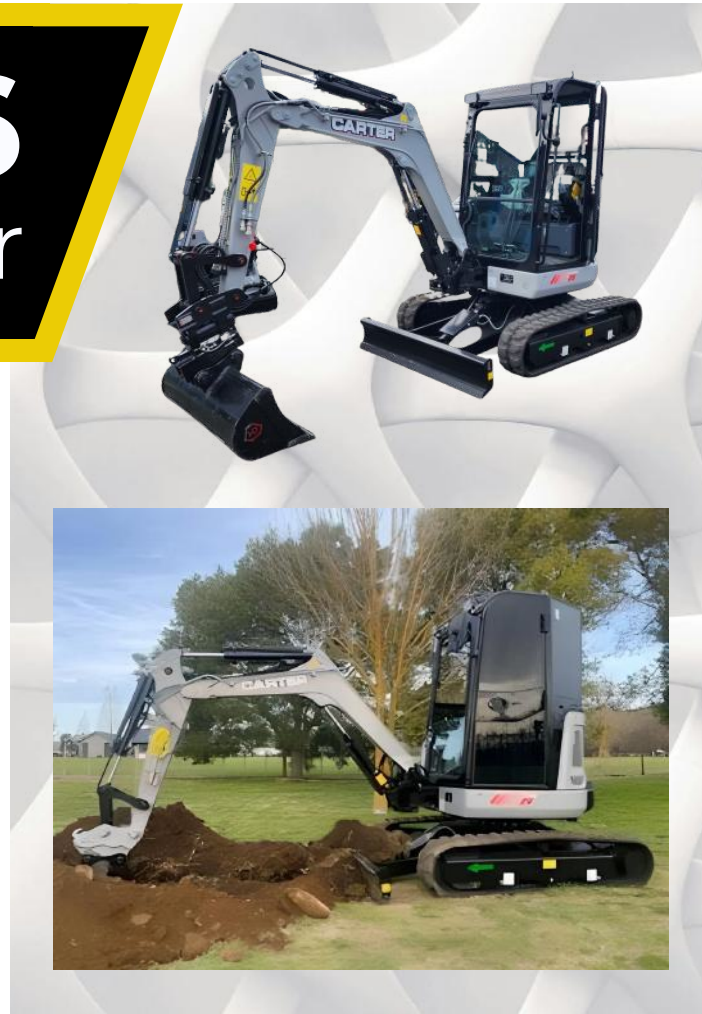


*Reliable Machine With Low Energy Consumption  
Perfect For New Zealand's Tough Conditions*

# CARTER CT26 Crawler Excavator

Introducing the **CARTER CT26** Crawler Excavator with a 15kw Yanmar 3TNV80F Engine - Extremely Reliable. Perfect for New Zealand's Tough Conditions.

- **Operating Weight: 2.6 Tonne**
- YANMAR 15kw Euro V Engine
- Option for an - Elite 180° Hitch or Hydraulic Quick Hitch
- Rubber Track; With Blade
- Zero Tail Excavator
- Japanese Nachi Load Sensing Pump
- 2 Speed Nachi Final Drives
- Progressive Thumb Controls for the Dual Auxiliary
- Radio with Bluetooth, USB and Hands-Free Calling
- Air Conditioned Cabin for a Comfortable Operating Environment, Fire Extinguisher
- LED Work Lights
- Tool Kit, First-Service Filters & Oil Supplied



This is a True Zero Tail Excavator that is Built to Last with Low-Cost Service and Maintenance but with High Class Reliability. Yanmar 15kw Engine.

Japanese Nachi Load Sensing Pump, 2 Speed, Nachi Final Drives ISO Control Pattern and an Extremely Smooth and Powerful Hydraulic System that has Proven Reliability. Rubber Mounted and Air Conditioned Cabin for a more Comfortable Operating Environment.

Japanese Nachi Load Sensing Pump 2 Speed Nachi Final Drives, ISO Control Pattern and an Extremely Smooth and Powerful Hydraulic System that has Proven Reliability.

Rubber Mounted and Air Conditioned Cabin for a more Comfortable Operating Environment. This is a True Zero Tail Excavator that is Built to Last with Low-Cost Service and Maintenance but with High Class Reliability.

Backed by our 3 Year /3000 Hour Manufacturers Warranty Plus a 5 Year/5000 Hour Limited Warranty.

## **PACKAGE DEAL AVAILABLE**

Trench Bucket  
Rock/Digging Bucket  
Tilt Bucket Twin Cylinder  
Hydraulic Quick Hitch



6A Sloper Avenue  
Frankton, Hamilton 3204



hamiltondiggers@gmail.com  
www.carterexcavators.co.nz



021 1154 722

# ATTACHMENTS AVAILABLE



**Ripper**



**Post Driver**



**Stump Grinder**



**Shears**



**Grab Bucket**



**Weed Rake**



**Hedge Trimmer**



**Tree Saw**



**Rock Breaker**



**Bucket**

**PROUDLY  
NEW ZEALAND  
OWNED  
& OPERATED**



6A Sloper Avenue  
Frankton, Hamilton 3204



hamiltondiggers@gmail.com  
www.carterexcavators.co.nz



021 1154 722